



Alpha Beta Bits

Delta Kappa Gamma Society International – Eta State, NC

VOLUME 16

ISSUE 2

NOVEMBER 2016

DATES TO REMEMBER

**April 28 - 30
2017**

Eta State
Convention
Wilmington, NC

**June 23 - 25
2017**

Eta State Leadership
Development Seminar
Asheboro, NC

**July 19 - 22
2017**

Southeast Regional
Conference
Myrtle Beach, SC



ALPHA BETA CHAPTER OFFICERS

**Lorine Davis
President**

**Denise Byrd
1st Vice President**

**Mary Helen Sills
2nd Vice President**

**Jennifer Bare
Secretary**

**Becky Kuszmaul
Treasurer**

Message from President Lorine Davis

Dear Alpha Beta Sisters,
I'm looking forward to our November meeting! I can hardly wait to see you. Show & Sell is always fun – we bring a great variety of items to share and I enjoy bidding wars. It's really more fun when I must work to get the items I want. I even enjoy it when someone else gets the items I pick since our scholarship funds benefit from the good-hearted competition.

Speaking of scholarships, I've been doing my homework for getting our internal scholarship processes ready to go. I hope to have everything in place so that we can share the application at our

November meeting. It brings me great joy to know that we are able to support one of our Sisters in her quest to grow professionally.

As members of Alpha Beta Chapter, we've worked at our profession in order to be our very best. We know how to walk the walk and talk the talk. We do our jobs and take pleasure in our successes with students. We understand that politics play a huge part in what happens in education – and we are more mindful than ever that our votes count and that it's our responsibility to influence our elected

representatives and officials. We anticipate new school years and our relationships with students and colleagues. But I sometimes wonder if we become distracted by the politics of education. I get disgruntled when I dwell on teacher pay... and principal and assistant principal pay... and superintendent pay. If dollars measure worth, NC isn't valuing me as much as New York values their teachers. Is that really true? The politics of bricks and mortar bother me. I've worked in a ... **See Page 2**

**President
Lorine Davis
2016-18**



Show and Sell



Our **Show and Sell** is one of my most favorite projects. The first reason is I get to see some of the special talents our members have especially in the homemade goods. I'm looking forward to the pickles, freshly baked brownies, and pies.

There should be no pressure to bring anything fancy. I think last year we had the most variety of items compared to the past. That helps give everyone something to bid on.

The second reason I love the **Show and Sell** is it is our biggest fundraiser of the year. We use the funds to support our endowment recipients. I can't think of a better project to help grow our profession. We have a tremendous amount of talent right here in our backyard. Some of the best and brightest young ladies come from our high schools in Johnston Co.

Our ultimate goal is to match the funds that were collected last year. We were able to raise **\$414.00.**

I am confident everyone will want to participate in the silent action so we can meet our goal. Thanks in advance for supporting this important project.



Message From President (Cont.)

1930s 3-story building, an old house with no insulation, a mobile unit, and a brand new high school. I currently work in a building that opened in the 1960s. I am aesthetically drawn to terrazzo floors in the hallways and classrooms with walls of windows that provide lots of natural light. But I am also concerned that I can count at least 15 unlocked outside entrances in the perimeter of our building. We are always aware that a disgruntled student, parent, employee, or even a stranger off the street has instant access to us and our students.

It's easy to get caught up in the politics – mention pay and safety and building inequality and we become passionate. Sometimes we must work at not letting that distract us from being our best. We dress to enforce an image of professionalism. Although we “know our stuff”, we continue to prepare our lessons and materials. We study data and learn more about how to reach “today’s students”. We learn new technologies in order to be sure our students are engaged and exposed and are on equal footing with other American students. We follow the rules because we understand hierarchy and why it is in place. We meet our representatives and explain our positions as educators. We are leaders at work and also in the community. We are coaches; we lead the cheering sections for athletics, dance, Scouts, and most every milestone of people’s lives. We volunteer to help others in need. We invest of our time, our talents, and don’t forget our resources. In Alpha Beta Chapter, this year we provided baked goods for our new hires. We will provide encouragement throughout the year. We will invest in the education of young women who are preparing to enter the teaching profession. We will email our legislators not on behalf of Alpha Beta or even Delta Kappa Gamma – we will influence for the sake of educators throughout NC. I am certain that those investments are in addition to those we each make in our own classrooms and our own personal children’s classrooms.

While the politics and inequities can bring out our passions, it is our day-to-day focus and attention that will define us as leading women educators. I encourage you to continue your walk – you’re doing a great job! And I will not discourage you from your passion – your need to strive for balance and equality in the politics of education. After all, that’s what Annie Blanton did in 1952 when she organized Delta Kappa Gamma.

We are entering the holiday season of thankfulness and joy and anticipation. May God richly bless you for showing love to others by being an educator.

Blessed beyond words, Lorine - alphabetapreslorine@gmail.com

Alpha Beta Chapter Minutes/Treasurer’s Report



Please read the minutes and treasurer’s report before each meeting.

Upcoming Alpha Beta Chapter Meetings

Nov. 29, 2016

Feb. 21, 2017

May 2, 2017

Sept. 26, 2017

Nov. 28, 2017



Don’t forget, you can donate to our **Alpha Beta Chapter Endowment Fund** in honor and/or memory of one of our Sisters. See copies of the form on **Page 16**.

It's About Taking Time to Fellowship



Chapter Excellence Award



For the last couple of years we have celebrated members who have gone over and beyond to support our Alpha Beta Chapter. One of the ways we do this is with the **Chapter Excellence Award**. Members are asked to keep a record of all the things they do to include attendance, participation, financial contribution, networking and lifelong learning. Members in the photo received the award for 2015-2016.



Photo includes (Standing L to R): Lynn Ragsdale, Becky Kuszmaul, Sonya Kiser, Abby Salas, Melissa Finch, Jennifer Swartz, Cynthia Toudle, Glenda Toler, Carolyn Riddick, LarKeysha Sheppard, Mary Helen Sills, Jennifer Bare, Ann Parrish, Renee Wiggs, Mary Ann Lee. (Sitting L to R) Mary Helen Wyatt, Ramona Cash, Mary Sauls, Karen Creech, Janice White.

Let's Stay Connected



Alpha Beta Chapter NC

Closed Group

Joined

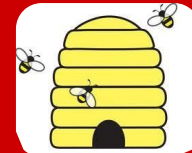
Share

Notifications

...



Saving the Bees



THEIR STINGS HAVE BENEFITS!

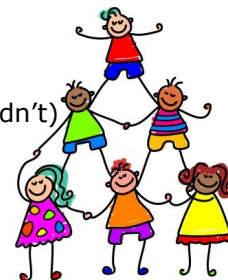
Here are a few more important facts about honeybees I hope you will find intriguing. "A toxin in bee venom called melittin may prevent HIV. Melittin can kill HIV by poking holes into the virus's protective envelope. (Meanwhile, when melittin hitches a ride on certain nanoparticles, it will just bounce off normal cells and leave them unharmed.) Scientists at Washington University in St. Louis hope the toxin can be used in preventative gels. Another interesting fact is bee stings may also ease pain caused by rheumatoid arthritis. I have a friend who was accidentally stung by a bee on her hand and noticed a significant reduction in the arthritis pain she suffers from. Researchers found that "molecules in bee venom increase your body's level of glucocorticoid, an anti-inflammatory hormone." I don't recommend getting stung on purpose, but I find this very fascinating.

<http://mentalfloss.com/article/53691/13-fascinating-facts-about-bees>

Supporting New Teachers

Our **Supporting Beginning Teacher Chairman, Jennifer Swartz** and her committee asked our members to come up with "**words of wisdom**" to share with all of the new teachers in Johnson County this year. Here is a list of topics our members were asked to reflection on as educators:

- Your **best memory** of teaching
- One of the **funniest things** that ever happened while teaching
- One of the days you seriously **thought about changing professions** (and why you didn't)
- One of your **favorite student moments** when you felt that you made an impact.
- Any **words of wisdom** that you would offer a new teacher.



I think it is wonderful we are taking the time to encourage our new teachers so they know we care.

Getting to Know You

Each newsletter is going to highlight Alpha Beta members who shared interesting facts about themselves so we can get to know each other a little better. Remember, if you didn't get to share your facts, please email them to Karen Creech or bring them to the next meeting. Facts about our mystery member is featured below.

**WHO
AM
I ?**

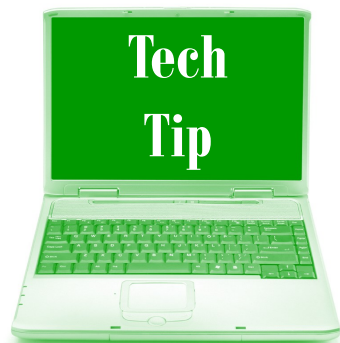
1. **My children Rachel and Henry are both my heart and soul.**
2. **I have a mean left hook in golf and can dribble a basketball.**
3. **I was born on Mother's Day. What a gift.**
4. **I have taught online for East Carolina University.**



Find Name of Mystery Member on **Page 6.**



Tech Tip



"Bitable Videos"

<https://biteable.com/>

I discovered a really fun Web 2.0 tool that I am confident you will enjoy. It is entitled, **Bitable**. It is a super easy-to-use video maker. A simple tutorial provides an outline on how to create a video. The Web 2.0 tool is free, but you can upgrade to add additional features.

There are hundreds of animated, live action or photo scenes in lots of different styles. You also have the option to use a pre-made template. Using a simple drag-and-drop timeline, it is easy to add your own text, photos, colors and sound to customize your video and edit it.

There is an option to choose music from their high-quality music library. All of the music has been hand-picked to match the look and feel of any video. Once you have created a video you can share it on YouTube, Twitter or Facebook by just pressing a button.

There are 16 different topic templates available to include animals & pets, arts & culture, design & photography, home & family to name a few.

To begin creating a **FREE** video follow these easy steps:

- Go to <https://biteable.com/>
- Create an account with your email address and a password.
- Next, click on the **FAQ** section at the top and go to: <https://biteable.com/faq/>.
- Follow the easy video tutorial entitled, "**How To Make A Video.**"

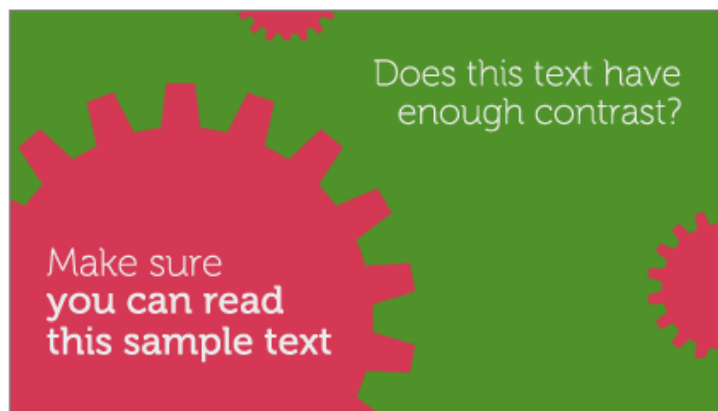


Below are 6 of the 32 different color combinations to choose from or you can customize your own template.

Color Palettes



Custom Colors



Did you guess right? The **Mystery Member** highlighted on **Page 5** is **Jennifer Moore**.

Visit our **Chapter Facebook** page at: <http://www.facebook.com>. Search for **Alpha Beta Society International**.

Eta State Executive Board

President Lorine Davis attended the Eta State Executive Meeting at Elon College. She happily reported that **Region III** had **100% attendance** at the board meeting.

The purpose of the meeting was for all of the regional directions and chapter presidents to collaborate on Eta State business. Lorine was delighted she got to see our **Region III Director, Cheryl Wright** at the meeting. Cheryl a member of the *Gamma Tau* Chapter. She has already visited our chapter and continues to be a true partner with Alpha Beta.



**Eta State Executive Board Region III Members
2016 - 2018**

2017 Eta State Convention

I plan to share information about the state convention in hopes that we'll have a big presence from Alpha Beta. It is not too early to make plans because the convention hotel has filled before the deadline in the past. The **Hilton Wilmington Riverside Hotel** will be the site of the convention **April 28-30, 2017**. You can make your room reservations by going to: http://www.hilton.com/en/hi/groups/personalized/I/IL/MNCHF-DKG-20170427/index.jhtml?WT.mc_id=POG.



You can also contact the hotel reservation desk at **910-763-5900** to see if rooms at our group rate are available. The deadline for the group rate is **March 27, 2017**. Region IV invites you to come early or extend your stay. April is azalea time in Wilmington, and if you haven't seen the variety of blooming azaleas in Wilmington, please make your plans early and book your room.

Interested in doing a session at the conference? A copy of the proposal form is found on **Page 15**.



Please use the new url
for our state web site -

<http://www.ncdkg.org/>

Facebook

www.facebook.com/dkgorg



Instagram

[@dkg_austin](https://www.instagram.com/dkg_austin)



Twitter

[@blanton29](https://twitter.com/blanton29)



Pinterest

www.pinterest.com/DKGS1



Eta State News Editor Position



Are you interested in a position at the state level? There is an opening for Eta State News Editor. The Personnel Committee has announced the opening of the application process for Editor of Eta State News. A job description and the application form will be available soon on the new Eta State NC website.

If you are interested in this position, please watch the forms page at <http://www.ncdkg.org/forms.html> on the Eta State Web site for the posting. Applications will be accepted until **January 15, 2017**.

Candidates will be interviewed in **February, 2017** at a location central to the candidates. A recommendation is anticipated by **March 1, 2017**, and it will be forwarded to the Executive Board for the April meeting. Please send applications to **Suzi Cabe, Chair, Personnel Committee**, at **141 Phillips Lane, Franklin, NC 28734** or email them to her at suzi.cabe@gmail.com.

Leadership Development Seminar



Registration is open for the **Leadership Development Seminar** to be held **June 23-25, 2017** at **Caraway Conference Center** near Asheboro. The theme will be **"A Leadership Launch: Igniting Your View of Leadership."**

Participants will discover their strengths using the **StrengthFinder Assessment**, learn how to use their strengths to their advantage, and practice their skills using a PLC in a different way. To learn more, download the brochure from the Leadership Development Committee's webpage at <http://www.ncdkg.org/leadershipdevelopment-committee.html>. A copy of the form is available for your convenience on **Page 14** also.

Participation is limited to the **first 30 registrants**. This seminar will not be a "drop-in" type as in previous years. Participants must commit to attend all three days. The **registration fee of \$60** includes accommodations for two nights with linens provided, five meals, and daily snacks. Once accepted, an **additional \$15 skills assessment fee** will be required and paid online prior to attending. Register early if you are interested since the number of participants is limited to 30.

Eta State Headquarter Project



The headquarters project continues to build DKG memories. You can buy a paving brick in honor or memory of someone or to celebrate your chapter as part of the **"Pave the Way for DKG Memories"** project to raise money for Eta State Headquarters. Bricks may be engraved with up to **three lines of 18 characters each**. The cost **per brick is \$125**. I hope that you will consider purchasing a paving brick in honor or memory of one of our members. We have a lot of wonderful women to choose from our chapter.

Forms can be found on **Pages 12 and 13**. Mail the forms and payments to **Eta State NC Treasurer Ruth Jones** at **3607 Wyneston Road, Greenville, NC 27858**.



News From Eta State President

President Groves shared in her **President's Page** that she thought the DKG International Convention was a rewarding experience in Nashville, TN. She was joined by other outstanding women from 17 countries who were able to gather information and discuss timely topics. There were more than 100 breakout sessions and 50 hot topic mini sessions that highlighted topics such as leadership, educational excellence, technology training, legislative advocacy and more!

One of the four featured speakers at the International Convention was **Chief Transformation Officer of Girl Scouts USA, Natalye Paquin**. President Groves was so proud two Eta State NC chapters, Alpha Psi in New Bern and Alpha Nu in Burke County are working with scout troops in their area. Natalye Paquin applauded the overwhelming number of DKG members in attendance who had been Girl Scouts. She pointed out the parallel between preparing girls to take the lead in their lives and the world with our DKG mission to promote professional and personal growth. Ms. Paquin cited statistics showing that **80% of girls involved in scouting take on leadership roles as adults**.

Ms. Paquin shared a story about an early-elementary grades soccer team, all girls, who had never won a game. To motivate the girls, their coach ended with the question **"Are you ready?"** to which the girls responded, in unison, **"Born ready!"** President Groves shared this activity demonstrated their shared determination to take on the task of winning. She believes that acclamation can also be used to inspire women who are a part of the DKG team. She asks as we begin a new chapter biennium to work together as a team to realize the **Purposes of our Society**. As a member of Alpha Beta, are you ready to take the lead in supporting women, children, and excellence in education? **Born ready!**



**President
Sheila Groves
2015-2017**

**Connect with
President Groves**

svgeta97@gmail.com

DKG International President



One of the main goals of DKG International Society is to make sure as a member you feel you are important and you matter. It has been recommended one of the ways we can make that happen is to keep you informed of membership benefits you have as a member of DKG. As members you can take advantage of scholarships, grants, project funding, leadership training/opportunities, and conferences, discounts for services and products and more. It is important that you know about these opportunities!

Both President Davis and I want to keep you as informed as possible. At each of our meetings we want you to let us know if you are not receiving your copy of the following newsletters, Eta State, DKG News, and Alpha Beta Bits. In an effort to keep you informed, we will be a web watcher to ensure you get the latest information from both the Eta State and DKG Website to include any new information about features and benefits.

I will include deadlines for applications in our chapter newsletter and will provide copies of the applications when possible. In this newsletter issue I have included information regarding the Eta State News Editor position and applications for the "Pave the Way for DKG Memories", the Leadership Launch Seminar, and the 2017 Eta State NC Convention Breakout Session Form.

Please remember you can submit an article to a DKG publication or creative works to the Fine Arts Gallery. Don't forget the DKG Website requires log in when accessing member resources like publications or chapter resource items. I shared the password with you at our last meeting. Please let me know if you need the password again. You can use your member ID as your username when logging in the first time. Please let me know what else we can do to ensure you always feel informed.



**INTERNATIONAL
PRESIDENT**

**Carolyn
Pittman**

2016-2018

Nov. – April Birthdays



A special **“Birthday Wish”** from your Alpha Beta Sisters

November	December	January
Karen Parker - 2	Ann Pittman - 6	Carolyn Riddick - 1
Janice White - 5	Margaret Lee Walker - 6	Joyce Matthews - 13
Denise Byrd - 9	Abby Salas - 15	Cathy Cox - 16
* Eloise Bonds - 11	Johna Faulconer - 29	Jennifer Swartz - 27
LarKeysha Sheppard - 11		Ann Parrish - 28
Barbara Barnes - 14		Glenda Hales - 31
Ana Lucia Milazzotto - 18		
Sonya Kiser - 28		



* **SPECIAL NOTE : Eloise Bond** celebrated her **100th birthday** on **Fri. Nov. 11th**. Her daughters hosted a birthday tea. I will share pictures in our next newsletter of this very special occasion.

February	March	April
Suzanne Mitchell - 12	Allette Hale - 19	Freddie Creech - 1
Gayle Barbour - 21	Renee Wiggs - 28	Bess Ragsdale - 14
Jean Stowers - 26	Marlene Sanders - 30	Frances Warren - 14
Mary Helen Sills - 26		Olive Cooke - 16
		Yvette Davis - 27

Purpose and Mission



The Delta Kappa Gamma Society International

promotes professional and personal growth of women educators and excellence in education.

TO UNITE women educators of the world in a genuine spiritual fellowship.

TO HONOR women who have given or who evidence a potential for distinctive service in any field of education.

TO ADVANCE the professional interest and position of women in education.

TO INITIATE, ENDORSE, AND SUPPORT desirable legislation or other suitable endeavors in the interests of education and of women educators.

TO ENDOW scholarships to aid outstanding women educators in pursuing graduate study and to grant fellowships to non-member women educators.

TO STIMULATE the personal and professional growth of members and to encourage their participation in appropriate programs of action.

TO INFORM the members of current economic, social, political, and educational issues so that they may participate effectively in a world society.

Alpha Beta Chapter

Organized April 19, 1952



Thoughts and Prayers



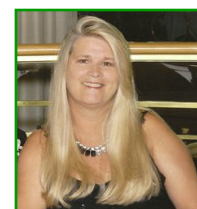
We have several members or their family members who are not doing well. I know they will appreciate you keeping them in your thoughts and prayers.

Barbara Barnes	Betty Ferrell	Maylene Sanders
Laura Faye Canaday	Glenda Hales	Mary Sauls
Freddie Creech	Bess Ragsdale	Margaret Walker

If you would like to add someone to this list, please contact Karen at: karen.creech@ncpublicschools.gov



If you have an idea for an article or information you would like to see added to the newsletter, please contact the editor, **Karen Creech**, at karen.creech@ncpublicschools.gov



DKG Eta State NC Engraved Brick Form

Name _____

Address _____

Telephone: Home _____ Cell _____

E-mail _____

Chapter _____

Please send the attached LASER ENGRAVING 4 X 8 ENGRAVED PAVER WORKSHEET with this form to Ruth Jones, 3607 Wyneston Road, Greenville, NC 27858 with \$125.00 for each brick to be purchased.

Message on Worksheet is three lines of 18 characters per line including commas, spaces, and symbols.

Message must be on official PINE HALL BRICK WORKSHEET.

LASER ENGRAVING 4 X 8
ENGRAVED PAVER WORKSHEET

NOTE: ONLY ONE CHARACTER IN EACH BOX. ALL LETTERS,
PUNCTUATION AND SPACES COUNT AS ONE CHARACTER



AMERICA'S PREMIER PAVER®

"A Leadership Launch"

Leadership Development Seminar
The Delta Kappa Gamma Society International
Eta State

June 23-25, 2017

Caraway Conference Center, 4756 Caraway Mountain Road, Sophia, N.C. 27350

Seminar Registration - Mail completed registration form to: Linda Little, 330 Topview Drives, Wilkesboro, N.C. 28697
Deadline for registration and payment: May 1, 2017 Make all checks payable to: Eta State
No refunds after June 1, 2017

Please type or print: **Use one form for each person.**

Title (Circle one): Dr., Miss, Mrs., Ms. _____
Last Name
First Name
Middle Initial

Preference for Name Tag: _____

Mailing Address: _____
Street
City
State
Zip

Email Address: _____ Phone Number: _____

DKG Chapter Name: _____ DKG Chapter Region: _____ Number of Years in DKG: _____

Current Chapter Leadership Role (if any): _____

Number of Years in Education: _____ Current Position in Education: _____

Registration Fee: \$60.00
(includes accommodations for 2 nights with linens provided, 5 meals, and daily snacks)

****Once accepted, an additional \$15.00 skills assessment fee will be required and paid online prior to attending.****

Please select one of the following: My receipt can be sent to the email address listed above.
 I would prefer my receipt be included in my seminar packet.

Do you have dietary needs (specific food allergies?) _____

I request as my roommate: _____

A printed certificate indicating the number of contact hours will be provided.
If you have any questions about registration, accommodations, single occupancy, or meals, contact Linda Little at 252-671-9426 or clittle4@suddenlink.net.

Photo Release: By your attendance at this event you are granting your permission to be filmed, videotaped, audiotaped or photographed by any means and are granting full use of your likeness, voice and words without compensation.

Disclaimer: Attendance is required for all sessions for the entire 3 day event. Also, your email address will become a part of a google group for networking.

This seminar is supported by ETA State as part of the mission to grow and nurture future leaders.



2017 Eta State NC Convention Breakout Session Form

Delta Kappa Gamma members and friends are invited to submit breakout session proposals for the Eta State NC Convention in Wilmington, April 28-30. Breakout sessions will take place on Saturday afternoon, April 29 and be approximately one hour long.

Sessions will focus on four strands:

Technology, Teaching and Learning, Personal Growth and DKG Society.

Please complete the form below and submit it to Connie Savell, mcdpm59@gmail.com or 206 N. Roxford Rd., Kings Mountain, NC 28086-2731 by **January 25, 2017.**

*Date _____

*Presenter Name(s) _____

*Address _____

*City/State/Zip _____

*Contact Phone Number _____

*Email _____

*Chapter/Group/Committee _____

*Breakout Title _____

*Provide a brief synopsis of the session.

Check all Strands that apply:

Technology Teaching and Learning Personal Growth DKG Society

The **Facilitator** will introduce presenters and help with setup and pack up of materials. You may list a facilitator for your breakout session or a volunteer will be assigned to you.

Facilitator Name _____

Email _____

Computers and/or projectors used in sessions must be provided by presenter/s. Please tag all personal equipment.

Handouts are the responsibility of the presenter/s.

*Provide a brief biographical profile for use in introducing the presenter/s.

***Required**

Contribution to: Alpha Beta Chapter Endowment Fund
Established 5-11-2000

Date of Contribution: _____
Contribution in Memory/Honor of: _____
Person to be Notified of Contribution: _____
Address of Person to be Notified: _____
Contributor's Name: _____
Amount: _____ Check Number: _____ Cash: _____

Make Checks to Alpha Beta Chapter and mail to Becky Kuszmaul at: 2861 Yelverton Grove Rd. Smithfield, NC 27577.

Contribution to: Alpha Beta Chapter Endowment Fund
Established 5-11-2000

Date of Contribution: _____
Contribution in Memory/Honor of: _____
Person to be Notified of Contribution: _____
Address of Person to be Notified: _____
Contributor's Name: _____
Amount: _____ Check Number: _____ Cash: _____

Make Checks to Alpha Beta Chapter and mail to Becky Kuszmaul at: 2861 Yelverton Grove Rd. Smithfield, NC 27577.

Contribution to: Alpha Beta Chapter Endowment Fund
Established 5-11-2000

Date of Contribution: _____
Contribution in Memory/Honor of: _____
Person to be Notified of Contribution: _____
Address of Person to be Notified: _____
Contributor's Name: _____
Amount: _____ Check Number: _____ Cash: _____

Make Checks to Alpha Beta Chapter and mail to Becky Kuszmaul at: 2861 Yelverton Grove Rd. Smithfield, NC 27577.