



Alpha Beta Bits

The Delta Kappa Gamma Society International – Eta State, NC

VOLUME 17

ISSUE 4

JAN.-FEB., 2018

DATES TO REMEMBER

April 1,
2018

Early Bird Registration
Eta State Convention

April 27 - 29,
2018

Eta State
Convention
Charlotte, NC

July 16 - 20,
2018

DKG International
Convention
Austin, TX



ALPHA BETA CHAPTER OFFICERS

Lorine Davis
President

Denise Byrd
1st Vice President

Mary Helen Sills
2nd Vice President

Jennifer Bare
Secretary

Becky Kuzmaul
Treasurer

Message from President Lorine Davis

As February wanes and we're on the cusp of March, I am reflecting on our last Alpha Beta Chapter meeting. Now, I've been to lots of meetings in my working life. Johnston County Ed Foundation meetings were good because I received direction and encouragement from so many educational and business leaders in our community. Chamber of Commerce meetings were great for networking and for learning all the wonderful attributes of our JoCo towns. Church

meetings tend to be a bit more reserved and conservative. JoCo Teen Drivers meetings were student focused and student led with a worthy goal of reducing student fatalities from vehicle accidents. Johnston County Schools Board meetings helped me understand the dynamics of our school board, allowed me to cheer on awesome educators and students, and often led to understanding the whys of decisions that were made. JCS Quality Council meetings were

educational in Total Quality. High Five Meetings were educational as well, exposing me to cutting edge trends for education. School staff meetings run the gambit: some were informative and others were held for the sake of meeting because it was Wednesday. I clearly remember attending a school staff meeting for a sales pitch that rewarded our school with a 20-cup coffee maker...See Page 2

**President
Lorine Davis
2016-18**



Paving the Way Project

Paving the Way Project to line the sidewalk at Headquarters ends **May 5th**, the Saturday after the Eta State NC Convention in Charlotte. They are getting closer to the 100 bricks needed to defray the cost of shipping. **Bricks are \$125.00.**

Contributions before March 1st can be used on the 2017-2018 **Chapter Achievement**

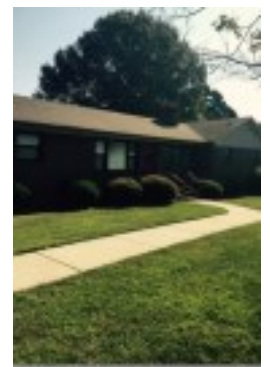
Award form. This is a wonderful way to honor your members, chapter or region.

Send paving brick forms and donations to:

**Eta State NC Treasurer
Ruth Jones**

**3607 Wyneston Road,
Greenville, NC 27858**

Please make sure that you denote **Headquarters** on the check information.



See **pages 13-14** for more info.



Message From President (Cont.)

These days I attend 504 meetings and IEP meetings and department meetings, along with much better run staff meetings.

But my favorite meetings are Alpha Beta meetings. First Baptist Church has become our standard meeting place and Ryberg Hall is beautiful and comfortable. Everyone arrives with anticipation of seeing everyone! There are 1000 watt smiles and warm embraces. We catch up on personal news when we arrive and as we eat dinner. During the business meeting, we focus on our reasons for being Alpha Beta members: our focus on new teachers, literacy, encouraging young women to become educators through scholarships, providing books for children who have been separated from the familiar and are learning to make their way in a safer environment at **Harbor House**. We provide Chromebooks for an afterschool program through the **Partnership for Children**. We continue to deliver magazines to laundromats. We applaud new jobs and award those who have given years of service through Alpha Beta. We spend some time learning about how we can and should approach our legislators to discuss our educational concerns. We take time to remember those who are not with us and need a bit of encouragement because of health concerns. We take time to honor those who have passed from this life, remembering their personal and vocational excellence, their personalities, and their time with us at meetings. We are generous – we give of our time, our talents, and our resources. It's true that we love each other and support each other. We have wonderful guests at our meetings: superintendents, legislators and their assistants, community leaders from non-profits and healthy living encouragers, Eta State leaders and our Region III directors. These are meetings worth attending.

But the reason we attend, the reason we put on our smiles and fix our hair after long days at work, the reason we leave our families to fend for themselves for supper and "life" four nights a year, is the fellowship of being with women we revere and respect and admire. We're a stimulating group – listen to the conversations and hear about movers and shakers in our schools, advocates for children, community leaders, and creative thinkers. We don't give up. We bring out the best in each other and encourage each other. We trust each other. We are Sisters.

Thank you for allowing me the privilege of being one of you.

With love, Lorine— alphabetapreslorine@gmail.com

Alpha Beta Chapter Minutes/Treasurer's Report



Please read the minutes and treasurer's report before each meeting.

Upcoming Alpha Beta Chapter Meeting

May 1, 2018

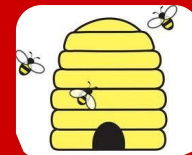
First Baptist Church in Smithfield, NC



Don't forget, you can donate to our **Alpha Beta Chapter Endowment Fund** in honor and/or memory of one of our Sisters. See copies of the form on **Page 12**.



Saving the Bees



BEES ARE JOB CREATORS

Honeybees are intriguing! Each newsletter will feature interesting facts about bees. If you become fascinated with bees, contact Karen Creech and share in her quest to help reverse the current trend of declining numbers of honeybees.

"Americans consume about 285 million pounds of honey each year. On top of that, the U.S. Department of Agriculture estimates that honeybees pollinate 80 percent of the country's insect crops—meaning bees pollinate over \$20 billion worth of crops each year."

<http://mentalfloss.com/article/53691/13-fascinating-facts-about-bees>

The Delta Kappa Gamma Society International
North Carolina, Eta State Organization
Eleven regions, 103 chapters



ETA DATA ~ Updates for Chapter Presidents and Editors

Vol. 9, No. 8

"Let's Sparkle!"

February 15, 2018

DKG: Leading Women Educators Impacting Education Worldwide

Don't forget you can get all of the **Eta State Newsletters**, **Eta Data**, online. The spring issue of **Eta State News** is now available. If you would like to see archived issues of the newsletter, you can go to: <https://www.ncdkg.org/uploads/8/0/8/5/80859646/etadatabfeb2018.pdf>. The archived issues available include the following issues: **May 2017 through February 2018**.



Getting to Know You



Each newsletter highlights an Alpha Beta members who shared interesting facts about herself so we can get to know each other a little better. Remember, if you didn't get to share your facts, please email them to Karen Creech or bring them to the next meeting. Facts about our mystery member featured below.

**WHO
AM
I ?**

1. **Our family of 13 celebrate each other's birthday with a family meal on the date of the birthday at my home. Each gets to choose their favorite menu. Our Grandmother White and my boys, Mike and Stan, all have birthdays on Sept. 21st.**
2. **I am President of Pine Level Senior Citizens group. We have been meeting for over 7 years.**



Find name of "Mystery Member" on
Page 5.

Terri Can Make A Difference

We all know that Terri Sessoms has a strong commitment to the children and the citizens of Johnston County so it is exciting that she has announced her intention to run for a seat on the Johnston County Public Schools Board of Education. Terri has been an educator for 32 years and an Alpha Beta member for 23 years in April. She has accomplished so many things during her career. She believes that her 32 years of experience in public education as an award winning teacher, leader, and national consultant can help Johnston County continue to be a place where people are proud to reside, raise families, and do business. She brings a successful working knowledge of classroom best practices, effective school leadership, school budget, facilities maintenance, community partnerships, and parent involvement. She has served as both a national curriculum consultant and a teacher on loan throughout the state and that helps to provide valuable curriculum and leadership expertise that she would like to contribute as she serves those who work with our students. She brings a county and statewide perspective as a Johnston County Schools Teacher of the Year (Flame for Learning) and the NC PTA Outstanding Teacher of the Year. This provides her experience on how to support families, educators, and children. She'll be an advocate for successful schools within our communities. Terri is the kind of person we want representing us as we face challenges in education. Courtesy of <https://jocoreport.com/terri-sessoms-announces-candidacy-for-johnston-county-board-of-education/>



Terri Sessoms

Let's Stay Connected



Alpha Beta Chapter NC

🔒 Closed Group

Joined ▾

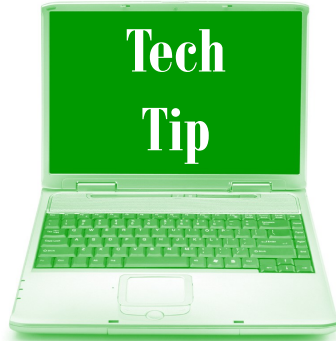
➦ Share

✓ Notifications

⋮



Tech Tip



Emaze

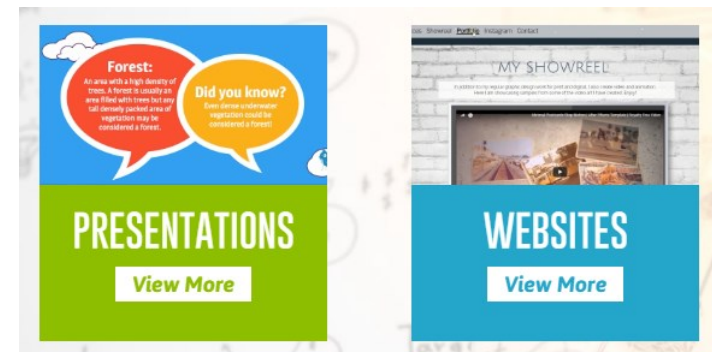
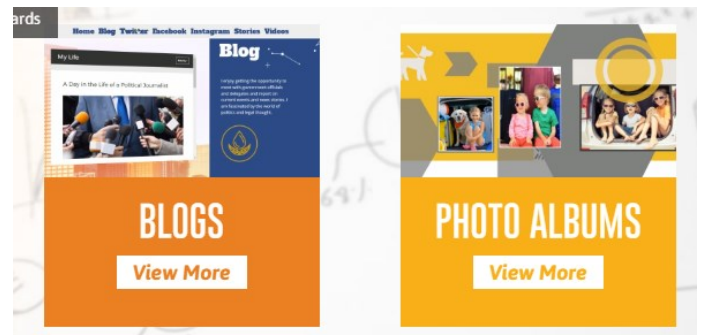
www.emaze.com/



Emaze is a Web 2.0 tool that teachers can engage their class with interactive presentations, making learning more accessible, stimulating, and effective. With Emaze, you can add video, audio and text. This will offer a unique potential for student engagement. Teachers and students can collaborate and share their work, convert their old presentations to an Emaze template, and make learning experiences that are memorable and fun. I think this is a Web 2.0 worth trying out because the tool continues to be up-dated and it is also FREE!

Reasons Why You Should Use Emaze

- ☑ Use it for **FREE!**
- ☑ Create and share engaging presentations.
- ☑ Choose a template and customize slides with your content.
- ☑ Add audio, photo and video media, live iframes, custom forms and web pages, infographics and special effects.
- ☑ Choose from newly added Web site features such as Facebook feed, slideshow, Instagram feed, Twitter feed, and Showcase.
- ☑ Access support resources such as a Getting Started Tutorial, Editor Overview, How to Add Audio, and Download Tutorial.



Did you guess right? The **Mystery Member** highlighted on **Page 3** is **Janice White**.



Eta State Convention 2018

It is still not too late to make arrangements to attend the **Eta State Convention**. The convention begins **Friday, April 27, 2018**, and ends on **Sunday, April 29, 2018**. Registration will open at **noon on Friday** and the Executive Board Meeting will begin at 4:00 p.m. The **Opening General Session**, including award presentations, will begin promptly at **7:00 p.m. Saturday** will feature **breakout sessions** and the **Chapter Presidents' Banquet**. The **Ceremony of Remembrance** and the Birthday Brunch will highlight Sunday's events.

- Convention Vendor Form:** To access the form go to: <https://www.ncdkg.org/uploads/8/0/8/5/80859646/2018vendorapplication.pdf>. Mail the form to **Debra Clayton**, Finance Committee Chair, 573 Ridgeway Warrenton Road, Norlina, NC 27563, or email Debra at: msdebrac@gmail.com.
- Convention Ads:** The deadline to add an ad to the program is **Mar. 31st**. To include an ad in the program go to: https://www.ncdkg.org/uploads/8/0/8/5/80859646/2018eta_state_nc_convention_program_ad_order_form.pdf. Mail the form to **Nancy Tunstall**, 664 Cole Farm Road, Warrenton, NC 27589 or email Nancy at: nancytunstall@gmail.com
- Early Bird Convention Registration:** The deadline for early registration is **Apr. 1st**. To access the form go to: https://www.ncdkg.org/uploads/8/0/8/5/80859646/2018convention_regform.pdf Contact **Terry Norris**, Convention Treasurer, 604 Tidewater Drive, Sanford, NC 37330 or email her at: etastatetreasurer2018@gmail.com
- Making Reservations:** The deadline for reservations is **Apr. 3 or until the block is filled**. Contact Hotel Registration for Hilton Charlotte University Place at <https://www.ncdkg.org/2018-convention.html> To register online go to http://www.hilton.com/en/hi/groups/personalized/C/CLTHUHF-DKG-20180426/index.jhtml?WT.mc_id=POG or call **704-547-7444**. Ask for the **DKG room block**.

Convention Project



All members, whether attending the 2018 Eta State NC convention or not, can participate in the convention project. Monetary donations in the form of gift cards, certified checks or money orders will help meet the needs of Region VI students and families still feeling the effects of Hurricane Matthew.

Make checks and money orders payable to **United Way of Robeson County** and denote for **Eta State NC Convention Project**. For more information, go to the Eta State Web site <https://www.ncdkg.org>. Then click on **News** to look for last month's Eta Data or the Spring Eta State News.

Missing Issues



Looking for **missing issues** of **Eta State News** The editor's archives are missing six print issues of Eta State News. **Editor Carol Bostian** is asking us to please check chapter files to see if anyone has the missing issues.

Missing Issues

2007

- Summer
- Fall
- Winter

2008

Please email Carol if anyone has any of these "lost" issues. Thank you for helping Eta State complete their files!

- Spring
- Summer
- Fall

Message From President Savell



INTERNATIONAL SOCIETY FOR KEY WOMEN EDUCATORS
DELTA KAPPA GAMMA™

President Savell shared in her message this month that she believes stress is a fact of life, especially in our fast-pace, multidimensional lives. She wants us to know that excessive stress is dangerous to our heart health.

Sadly, burning the candle at both ends and family responsibilities can cause our hearts to suffer. If you are too busy to spend time with friends and to do things you enjoy, her recommendation is to take time to evaluate personally and professionally! She hopes we ponder three things questions to help relieve some stress:

- Have you spent time with someone you love?
- Have you treated yourself to a piece of dark chocolate?
- Have you called a friend to just talk?

She believes that DKG provides genuine spiritual fellowship, which is good for your heart health, so you need to try to take time to participate on the chapter, state, and International levels.



**President
Connie Savell**

2017-2019

GOALS

Encourage **S**avvy leadership

S

Inspire **P**assionately, meaningful programs and projects

P

Analyze and **A**rticulate current educational issues

A

Further **R**espect for diversity in membership

R

Promote **K**nowledge through lifelong learning

K

Establish and **L**aunch a member wellness initiative

L

Advocate **E**xcellence in education

E

Email President Savell at:

mcdpm59@gmail.com

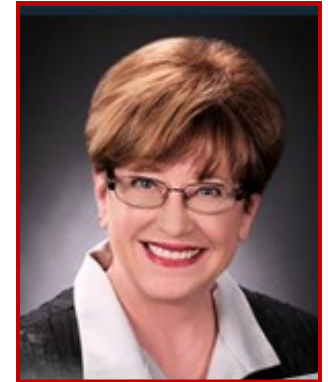
Tee It Up for Teachers

Eta State is putting together a charity golf tournament to raise for teachers. There will be lots of golf, prizes, food, and fun! Bring your family and friends to enjoy the first **NC DKG Educational Foundation Charity Golf Tournament**.

Registration for a team is \$500 and includes entry fee, cart, raffle ticket, golfer goody bag, breakfast biscuit and hotdog/hamburger lunch for four people. Individual registration is \$125. A portion of your entry fee is tax deductible. Look for registration information soon on the Foundation web site at **www.ncdkgef.org** or contact **Sheila Groves, svgeta97@gmail.com**. Make plans to be at the **Boone Golf Club, Monday June 11th, 8:00 a.m. to Tee It Up for Teachers!**



Message From International President Pittman



**INTERNATIONAL
PRESIDENT**

**Carolyn Pittman
2016-2018**

President Pittman took a different approach in her monthly message. She used several different quotes to make her point related to DKG. The first quote is, knowing "rules of the game" crucial to DKG's future. **"The best of ideas is hurt by uncritical acceptance and thrives on critical examination."** —George Polya, mathematician.

A focus of the 2018 International Convention will be proposed amendments of our governing documents. President Pittman wants all members to be aware they have the opportunity and obligation to know what the proposals are and to understand their impact if they are adopted or not adopted. There are 130+ proposed amendments. To manage this high number of considerations during the convention, proposals will be grouped by category. The intent is to allow a clear understanding of how a proposal from one part of the governing documents affects other related parts.

The second quote is, **"Nothing is so painful to the human mind as a great and sudden change."** — Mary Shelley, author. The DKG Administrative Board wants all members to know the proposals and their importance. President Pittman shares all members will have access to narratives that explain why certain proposals are made and how they impact the Society. Presentations at state organization meetings from Society representatives will be conducted this spring and that means we can know in advance of the changes.

The third quote is, **"To accomplish great things, we must not only act, but also dream; not only plan, but also believe."** —Anatole France, writer and journalist. President Pittman shares that many proposed amendments are not new thinking, just updated or more urgent than members thought they were 15 years ago. Every member has the privilege and responsibility to be informed of the possibilities and to give them careful thought. Acting together with a focus on the sustainability of The Delta Kappa Gamma Society International, we will continue to be "Leading Women Educators Impacting Education Worldwide."

The last quote is, **"You can have the nine greatest individual ballplayers in the world, but if they don't play together, the club won't be worth a dime."** —Babe Ruth, baseball player. President Pittman shares in this case, "playing together" means knowing the rules of the game, that is, knowing what are the proposals and their impact and understanding that YOUR participation is crucial.

I believe as members of Alpha Beta we have a commitment to be involved. It is up to us to make sure we get all of the information we need to make the best informed decisions. Let's take up President Pittman's challenge to seek out the information we need to ensure that the proposals approved are ones that will help DKG to continue to make us leading women educators who impact education worldwide.

strengthen
educate
together
educators
honor leaders
initiate grow world
LEADERSHIP
lead professional
empower connect
learn teachers
society promote
unite women

New DKG App

A new DKG app is available! You should delete your old app, The **new app** will have **two parts**:

- ☑ an everyday app (called the **365**) with news and updates you'd normally find on the website but in a format easier to use on your mobile devices, and
- ☑ the **convention app** with maps, schedules, speakers and more, specifically about the convention.



To download the **NEW app**, go to the DKG Web site at: <http://www.dkg.com>.

DKG Event

The International DKG Convention is going to be held in **Austin, Texas July 16– 20, 2018**.

There are so many fun things to do instead of spending Wednesday night, July 18th in your



room making a restaurant search.

Instead, join the fun at **“The Sights and Sounds of Austin.”** It will be right in the **JW Marriott Lone Star Ballroom** when the **DKG Educational Foundation** hosts its second annual Fundraising Event.

Tickets for the event may be ordered on the Convention Registration form and are **\$155** per person. For additional information, visit the DKG website at <http://www.dkg.com>.

Opportunities



Leadership



Networking



Assistance



Discounts



Activism

Mission

The Delta Kappa Gamma Society International promotes professional and personal growth of women educators and excellence in education.

Vision

Leading Women Educators
Impacting Education Worldwide

Jan.— June Birthdays



A special **“Birthday Wish”** from your Alpha Beta Sisters

January	February	March
Carolyn Riddick - 1	Morgan Dickens - 3	Darla Peedin - 9
Leigh Ann Nichols - 4	Kristy Stephenson - 4	Carol Massenburg - 13
Joyce Matthews - 13	Gayle Barbour - 21	Angie Proctor - 14
Cathy Cox - 16	Mary Helen Sills - 26	Renee Wiggs - 28
Jennifer Swartz - 27	Jean Stowers - 26	Maylene Sanders - 30
Heather Barbour - 31		
Glenda Hales - 31		



April	May	June
Freddie Creech - 1	Terry Dickens - 1	Amy Stanley - 8
Bess Ragsdale - 14	Trudy Farnell - 8	Noela Sue Woodall - 9
Frances Warren - 14	Rose Walker - 11	Kathy Hamilton - 13
Olive Cooke - 16	Jennifer Moore - 13	Tucker Twisdale - 19
Yvette Davis - 27	Karen Hicks - 17	Karen Collins - 25
	Sybil Edwards - 18	Lynn Ragsdale - 25
	Lorine Davis - 23	

***SPECIAL NOTE :** If you have a birthday in the months listed above and you do not see your name on the list, please contact Karen at: alphabetachapternc@gmail.com. She will make sure you are included on the list.

Purpose and Mission



The Delta Kappa Gamma Society International

promotes professional and personal growth of women educators and excellence in education.

TO UNITE women educators of the world in a genuine spiritual fellowship.

TO HONOR women who have given or who evidence a potential for distinctive service in any field of education.

TO ADVANCE the professional interest and position of women in education.

TO INITIATE, ENDORSE, AND SUPPORT desirable legislation or other suitable endeavors in the interests of education and of women educators.

TO ENDOW scholarships to aid outstanding women educators in pursuing graduate study and to grant fellowships to non-member women educators.

TO STIMULATE the personal and professional growth of members and to encourage their participation in appropriate programs of action.

TO INFORM the members of current economic, social, political, and educational issues so that they may participate effectively in a world society.

**Alpha Beta Chapter
Organized April 19, 1952**



Thoughts and Prayers



We have several members or their family members who are not doing well. I know they will appreciate you keeping them in your thoughts and prayers.

Barbara Barnes	Betty Ferrell	Maylene Sanders
Laura Faye Canaday	Freddie Creech	Glenda Hales
Bess Ragsdale	Cynthia Toudle	

If you would like to add someone to this list, please contact Karen at: alphabetachapternc@gmail.com



If you have an idea for an article or information you would like to see added to the newsletter, please contact the editor, **Karen Creech**, at alphabetachapternc@gmail.com



Contribution to: Alpha Beta Chapter Endowment Fund
Established 5-11-2000

Date of Contribution: _____
Contribution in Memory/Honor of: _____
Person to be Notified of Contribution: _____
Address of Person to be Notified: _____
Contributor's Name: _____
Amount: _____ Check Number: _____ Cash: _____

Make Checks to Alpha Beta Chapter and mail to Becky Kuszmaul at: 2861 Yelverton Grove Road. Smithfield, NC 27577.

Contribution to: Alpha Beta Chapter Endowment Fund
Established 5-11-2000

Date of Contribution: _____
Contribution in Memory/Honor of: _____
Person to be Notified of Contribution: _____
Address of Person to be Notified: _____
Contributor's Name: _____
Amount: _____ Check Number: _____ Cash: _____

Make Checks to Alpha Beta Chapter and mail to Becky Kuszmaul at: 2861 Yelverton Grove Road. Smithfield, NC 27577.

Contribution to: Alpha Beta Chapter Endowment Fund
Established 5-11-2000

Date of Contribution: _____
Contribution in Memory/Honor of: _____
Person to be Notified of Contribution: _____
Address of Person to be Notified: _____
Contributor's Name: _____
Amount: _____ Check Number: _____ Cash: _____

Make Checks to Alpha Beta Chapter and mail to Becky Kuszmaul at: 2861 Yelverton Grove Road. Smithfield, NC 27577.

LASER ENGRAVING 4 X 8
ENGRAVED PAVER WORKSHEET

NOTE: ONLY ONE CHARACTER IN EACH BOX. ALL LETTERS,
PUNCTUATION AND SPACES COUNT AS ONE CHARACTER



DKG Eta State NC Engraved Brick Form

Name _____

Address _____

Telephone: Home _____ Cell _____

E-mail _____

Chapter _____

Please send the attached LASER ENGRAVING 4 X 8 ENGRAVED PAVER WORKSHEET with this form to Ruth Jones, 3607 Wyneston Road, Greenville, NC 27858 with \$125.00 for each brick to be purchased.

Message on Worksheet is three lines of 18 characters per line including commas, spaces, and symbols.
Message must be on official PINE HALL BRICK WORKSHEET.