



Alpha Beta Bits

Delta Kappa Gamma Society International – Eta State, NC

VOLUME 16

ISSUE 3

JANUARY 2017

DATES TO REMEMBER

**April 28 - 30
2017**

Eta State
Convention
Wilmington, NC

**June 23 - 25
2017**

Eta State Leadership
Development Seminar
Asheboro, NC

**July 19 - 22
2017**

Southeast Regional
Conference
Myrtle Beach, SC



ALPHA BETA CHAPTER OFFICERS

**Lorine Davis
President**

**Denise Byrd
1st Vice President**

**Mary Helen Sills
2nd Vice President**

**Jennifer Bare
Secretary**

**Becky Kuszmaul
Treasurer**

Message from President Lorine Davis

Happy New Year!

Whew! It's been a busy January and I can hardly believe it's almost over. As educators, we return to work, refreshed from the Christmas break. We hit January at a full run, trying to meet our mid-year goals. Throw in a snow day or two and the Martin Luther King, Jr. holiday and the month just flew by.

I love my job as testing coordinator. It's a chance to see a school come together as a team to get a job done. This is my third year at

North Johnston High, where there is a low rate of staff turn-over. I've had to learn how things "are", and they've had to adjust to my way of getting the job done. I am so proud to be a NJ Panther when individuals step up to get a job done and make sure it's done to the best of their abilities.

The testing window closed yesterday, affording me the opportunity to attend a quarterly board meeting with the

Johnston County Affiliate of the NC Community Foundation, where I'm currently the treasurer. Now, don't get excited. It's more of an honorary title – Becky does more for Alpha Beta Chapter than I'll ever do for the Community Foundation! The JCCF Board approved new operating policies today, which are essentially by-laws. This is the third Board on which I've served...**See Page 2**

President

**Lorine Davis
2016-18**



Inviting Connections and Creating Possibilities

The **NCDKG Educational Foundation** is launching a major **three-year campaign**. The goal is to raise **\$50,000** each year for the next three years. Working together, members and community partners can reach this goal.

The Foundation Board invites all Eta State NC members to help the Foundation continue to grow.

Opportunities for giving include:

- Contributions from individuals
- Family & friends
- Community sponsors
- Matching gifts
- Honoria
- Memorials

- Estate planning
- Fund-raising events
- Endowments

For more information, contact **Dr. Barbara Leonard** at:

ncdkgfund3@gmail.com





Message From President (Cont.)

and there are parallel “issues” with any organization. Are we operating within the by-laws? Are we saying what we’ll do, then doing what we said we’d do? Have we adequately defined our mission and our plan of work? Are members contributing to the good of the organization? Is membership representative of our county? Have we been inclusive and do we continue to seek diversity, knowing that our strength will be in our differences as much as in our sameness? Is our name in front of the community, giving our organization the opportunity to grow and the opportunity to do our mission? Are we headed in the right direction? What are we doing to recruit new members that will bring something new to the organization and keep us vibrant?

Do the questions sound familiar to you? I’m guessing that many of them do. At our February meeting, we’ll be voting on new members of Alpha Beta Chapter – new Sisters. Unlike non-profit boards, our Sisters will be with us for a lifetime since there are no term limits for Sisters. Yet, we want to ensure that we continue to grow a strong Chapter with diversity to give us added strength. I’m looking forward to learning about our new Sisters in February!

Random thoughts: Our November meeting site was beautiful, and most of us know more about Johnston County than we did previously. You brought outstanding items for the Silent Auction and you bid generously. We easily agreed to support the efforts of the Literacy Committee in the purchase of Chrome Books for the Partnership for Children and you brought books that will become treasured items for children. You agreed to support a trial run of the Annie Blanton Scholarship for an Alpha Beta Member, and you strengthened and approved the application process. You voted to purchase an Eta State headquarters brick in honor of Frank Holding. You are beautiful women with infectious smiles, as proven by the photos in our newsletter.

Leading a group of leaders is more about keeping up than about staying out front. You are flexible, facilitative leaders. I am so fortunate to be a Delta Kappa Gamma sister!

Looking ahead to see where our footsteps will take us, Lorine - alphabetapreslorine@gmail.com

Alpha Beta Chapter Minutes/Treasurer’s Report



Please read the minutes and treasurer’s report before each meeting.

Upcoming Alpha Beta Chapter Meetings

Feb. 21, 2017

May 2, 2017

Sept. 26, 2017

Nov. 28, 2017



Don’t forget, you can donate to our **Alpha Beta Chapter Endowment Fund** in honor and/or memory of one of our Sisters. See copies of the form on **Page 16**.

It's About Taking Time to Fellowship



It's About Taking Time to Fellowship



Celebrating A Grand Milestone

One of our long standing Alpha Beta members, Eloise Bonds, has reached a grand milestone. She has celebrated her 100th birthday.

Eloise was a former Benson, NC resident who spent 43 years in education, 17 as a principal in Johnston County Schools. She now lives in Raleigh where her 2 daughters can be closer to her.

She attended East Carolina Teacher's College in Greenville for two years in the late 1940's and received her teacher's certificate. She taught in Clayton and lived in a boarding house there for 9 years.

In early 1960, she worked toward and received a master's degree in education at the University of North Carolina at Chapel Hill. She was promoted to principal and became the first woman principal in Johnston County Schools.



Rachel Eloise Bonds

Eloise shared that she is so proud of her accomplishments. She held many offices in the Benson Baptist Church and also was a member of the choir. She says her most important honor was when she was elected to be chairperson of the Board of Deacons for three years. She was the first female to attain that privilege. Another accomplishment she said she is most proud of is serving as a trustee on the board of directors at Campbell University for many years.

Our Alpha Beta Chapter has been able to enjoy Eloise's experience, expertise, and compassion for education since her initiation in 1964. We have been so fortunate to work side-by-side with Eloise for almost 53 years. I feel so honored to have Eloise as a member of Alpha Beta and see her as a role model.

Read, Ride, Think Grant

Congratulations to **Yvette Davis** and Anissa Holm, her co-media specialist, who wrote a grant for desk cycles. Their project is called "**Read, Ride, Think.**" Some of the project's goals are to improve student performance, increase student health and attention spans, and reduce behavioral issues by integrating fitness into the classroom environment. They plan to initiate a **Reading Readiness Flex Group** model to support struggling freshman readers. The desk cycles will serve as a tool to encourage reluctant readers to focus on assigned literacy tasks with greater comprehension. They anticipate that an increased interest in using the desk cycles will create a high level of task persistence, increased content retention, and improved critical thinking among reluctant learners.

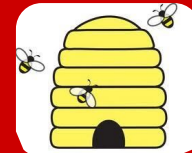
Yvette believes the best part of their grant writing experience is that students also received a grant. Yvette teaches a grant writing unit in their honors research and writing course. Each student grant team identified a teacher and his/her classroom needs. The students conducted research and worked closely with the teacher to design the project and wrote the grant for that teacher. Two of the five student grant teams won Johnston County Educational Foundation (JCEF) grants for their teachers!



Pictured from left to right: Todd Sutton (JCS school board member); Anissa Holm; Yvette Davis; Tom Patton.



Saving the Bees



WHEN BEES CHANGE JOBS, THEY CHANGE THEIR BRAIN CHEMISTRY!

Here are a few more interesting facts about honeybees, I hope you will find the information intriguing. "Bees are hardwired to do certain jobs. Scout bees, which search for new sources of food, are wired for adventure. Soldier bees, discovered in 2012, work as security guards their whole life. One percent of all middle-aged bees become undertakers—a genetic brain pattern compels them to remove dead bees from the hive. But most amazingly, regular honeybees—which perform multiple jobs in their lifetime—will change their brain chemistry before taking up a new gig."

<http://mentalfloss.com/article/53691/13-fascinating-facts-about-bees>

Let's Stay Connected



Getting to Know You

Each newsletter is going to highlight Alpha Beta members who shared interesting facts about themselves so we can get to know each other a little better. Remember, if you didn't get to share your facts, please email them to Karen Creech or bring them to the next meeting. Facts about our mystery member is featured below.

**WHO
AM
I ?**

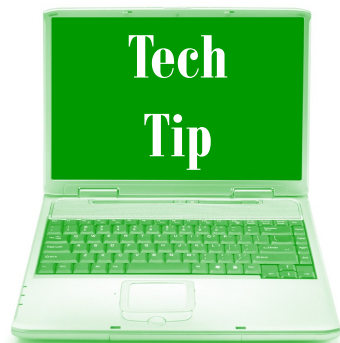
- 1. Freddie Creech and I met at Four Oaks Elementary and have been friends for 40+ years.**
- 2. I was the accompanist for the College Singers at ECU.**
- 3. I have had blonde hair all of my life, thanks to my hair dresser.**
- 4. I love to bake lemon pies. I also like to eat them!**



Find Name of Mystery Member on Page 7.



Tech Tip



Web Worksheet Wizard and **Project Poster** have combined to make **Web Poster Wizard**. This Web 2.0 tool is sponsored by a well know organization, <http://www.4teachers.org/> that includes Web 2.0 tools you are probably very familiar with to include, **Rubistar** and **TrackStar**.

Web Poster Wizard is a **FREE** tool that both teachers and students can use. Teachers can create a lesson, worksheet, or class page and make it available to students immediately online. They can also set up classes and assign projects to students. Students complete the assignments by creating their own online projects or reports.

"Web Poster Wizard"

<http://poster.4teachers.org/>

If you have used **Web Worksheet Wizard** or **Project Poster** in the past, your accounts are still available. You can login to your account using your same email account and password information. You do not need to create a new account. If you need any assistance, you can contact Web Poster Wizard at: <http://poster.4teachers.org/contactus/>.

How To Get Started

1. You can register to use this new tool at: <http://poster.4teachers.org/>.

NOTE: Teachers who already had a Web Worksheet Wizard or Project Poster account can login with their previous login information. All your previous work will be in this new tool.

2. Once you create classes, a class code is automatically created for each class.
3. Next, you can start making Web pages.
4. If you want to assign a project to the class, you can print out the class codes for the students and hand them out with the assignment.
5. Students go to, '**Create a New Poster**' link in the **Student Login** box and fill in the requested information.
6. Students can edit their own posters at any time by typing their poster ID number and password in the **Student Login** box.
7. You and your students can view their pages by entering the **ID number**, **teacher name**, or **class code** in the "**Search for a Poster and Worksheet**" section.
8. Use the Teacher Feature option to automatically make a class page that links to all archived student projects in that class.



Web Poster Wizard


Quick and easy online school projects and short reports.

New Features

- Centralized login for better teacher organization.
- Student and teacher information now in one account.
- The **Archive** options keep student projects longer than one month.
- The **Teacher Feature** option creates one Web page of class' archived projects.

Examples of posters and worksheets are available on the Web site.

Jupiter
The Largest Planet



Description: This picture is of Jupiter and was featured on the NASA Astronomy Picture of the Day
Image copyright: NASA Public Domain

Jupiter is the largest planet. Three planet Earths would fit inside Jupiter. However, it is made up entirely of gas and has no solid surface. It is 90% hydrogen and 10% helium. The red dot on its surface, called the Great Red Spot, is caused by a storm. This storm is like the hurricanes we have here on Earth, but it has been going on for more than 300 years.

Links:

- Nine Planets
- Welcome to the Planets!
- Windows of the Universe
- Solar System Expedition

Did you guess right? The **Mystery Member** highlighted on **Page 6** is **Olive Cooke**.

Visit our Chapter Facebook page at: <http://www.facebook.com>. Search for Alpha Beta Society International.

2017 Eta State Convention

This is a friendly reminder that the Eta State Convention is **April 28-30, 2017** at the **Hilton Wilmington Riverside Hotel**. For more information go to: http://www.hilton.com/en/hi/groups/personalized/I/ILMNCHF-DKG-20170427/index.jhtml?WT.mc_id=POG.



You can also contact the hotel reservation desk at **910-763-5900** to see if rooms at our group rate are still available. The deadline for the group rate is **March 27, 2017**.

Region IV invites you to come early or extend your stay. April is **azalea time** in Wilmington, and if you haven't seen the variety of blooming azaleas in Wilmington, please make your plans early and book your room. **Don't hesitate, make your reservations TODAY!**

Interested in doing a session at the conference? A copy of the proposal form is found on **Page 15**.

“The Art of Leading”

The **2017 Eta State Leadership Seminar** is being held at the **Caraway Conference Center** location near **Asheboro, N.C., June 23-25, 2017**. The seminar will focus on various formats including presentations, small group discussions, and activities related to **“A Great Teacher”** seminar. Time is built in for networking and self-reflection of skills noted from the StrengthsFinder Assessment.



“The Art of Leading” is the theme of the seminar. The collective wisdom of participants will be emphasized, thus being a draw for younger teachers as well as veterans. You are encouraged to get your applications in as

soon as possible because registration is **limited to only 30 participants**. Lessons learned during the seminar can be applied in your personal life as well as your professional career.

Contact **Linda Little** or any member of the committee for more information. A copy of the seminar registration form is on **Page 14**.



Please use the new url for our state web site -

<http://www.ncdkg.org/>

Facebook

www.facebook.com/dkgorg



Instagram

[@dkg_austin](https://www.instagram.com/dkg_austin)



Twitter

[@blanton29](https://twitter.com/blanton29)



Pinterest

www.pinterest.com/DKGS1





News From Eta State President

Honor, Unite, Advance, Initiate, Endow, Stimulate and Encourage, Inform

In President Groves' message she asked if the words above sounded familiar. She shared that these are the actions that support the **Purposes of our Society**, bring our mission to life, and keep us progressing. She believes the actions of DKG members combine to make a difference in our communities, our states, and globally.

She feels that now is a good time for us to take a look at how we will ensure the future of DKG in NC. A strong state organization encourages chapters to pursue the work of DKG actively and contribute to a **"thriving, meaningful Society."** Here are some of the things we want to consider to keep our chapters healthy and growing.

Find a balance between continuity and change, build a culture that holds onto the best practices but embraces the freedom to explore innovative ideas and new procedures.

She wants us to be sensitive to the emotions of all members, talk about issues and enjoy the adventure of discovering solutions together. Also, she wants us to support training that targets our member's needs and interests. To accomplish that we need to develop and inspire emerging leaders. Let's continue to mentor members serving in leadership positions. Seek new members who offer fresh ideas and new perspectives. Encourage members to pursue Society roles that match their personal skills and interests. Safeguard time and effort, reprioritize and eliminate unnecessary work. Lastly we need to create opportunities for members to take an active part in Society programs and projects. The perfect measure will keep us moving forward.



**President
Sheila Groves
2015-2017**

**Connect with
President Groves**

svgeta97@gmail.com

DKG International President



Each One Reach One: Our Member-Driven Society

In her first column, International President Pittman discussed **"The Butterfly Effect"** which is the concept that a small action, such as the flap of a butterfly's wings, can result in large consequences by progressively moving air molecules that can change weather patterns on the other side of the planet. She believes it is the perfect metaphor for DKG.

Some examples of a single action that impacts a person's outlook can include greeting someone at a chapter meeting, welcoming a new member to the faculty, being patient with a frustrated parent or child and waving at your neighbor.

She believes every member is connected to other members. She wants to know if you use the power of that connection to build your own professional and personal life. Do you use the power of connection to build someone else's professional and personal life?

The mystery is that one positive act, one tiny deed of goodwill, does not end. The recipient — colleague, friend, student, worker, spouse — is only the beginning of the ripple that begins with you.

She wants you to know **YOU are the member who drives the Society.**



**INTERNATIONAL
PRESIDENT**

**Carolyn
Pittman**

2016-2018



Jan. – June Birthdays

A special **“Birthday Wish”** from your Alpha Beta Sisters

January	February	March
Carolyn Riddick - 1	Gayle Barbour - 21	Darla Peedin - 9
Joyce Matthews - 13	Jean Stowers - 26	Carol Massenburg - 13
Cathy Cox - 16	Mary Helen Sills - 26	Angie Proctor - 14
Jennifer Swartz - 27		Allette Hale - 19
Ann Parrish - 28		Renee Wiggs - 28
Glenda Hales - 31		Marlene Sanders - 30



April	May	June
Freddie Creech - 1	Terry Dickens - 1	Amy Stanley - 8
Tracey Peedin-Jones - 14	Fran Riddick - 3	Noela Sue Woodall - 9
Bess Ragsdale - 14	Trudy Farnell - 8	Kathy Hamilton - 13
Frances Warren - 14	Rose Walker - 11	Tucker Twisdale - 19
Olive Cooke - 16	Mary Sauls - 12	Heather Anders - 25
Katie Speer - 19	Jennifer Moore - 13	Lynn Ragsdale - 25
Yvette Davis - 27	Karen Hicks - 17	Karen Collins - 25
	Sybil Edwards - 18	
	Lorine Davis - 23	
	Jennifer Foy - 27	

***SPECIAL NOTE :** If you have a birthday in the months listed above and you do not see your name on the list, please contact Karen at: karen.creech@ncpublicschools.gov. She will make sure you are included on the list.

Purpose and Mission



The Delta Kappa Gamma Society International

promotes professional and personal growth of women educators and excellence in education.

TO UNITE women educators of the world in a genuine spiritual fellowship.

TO HONOR women who have given or who evidence a potential for distinctive service in any field of education.

TO ADVANCE the professional interest and position of women in education.

TO INITIATE, ENDORSE, AND SUPPORT desirable legislation or other suitable endeavors in the interests of education and of women educators.

TO ENDOW scholarships to aid outstanding women educators in pursuing graduate study and to grant fellowships to non-member women educators.

TO STIMULATE the personal and professional growth of members and to encourage their participation in appropriate programs of action.

TO INFORM the members of current economic, social, political, and educational issues so that they may participate effectively in a world society.

Alpha Beta Chapter

Organized April 19, 1952



Thoughts and Prayers



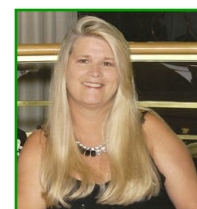
We have several members or their family members who are not doing well. I know they will appreciate you keeping them in your thoughts and prayers.

Barbara Barnes	Betty Ferrell	Maylene Sanders
Laura Faye Canaday	Glenda Hales	Mary Sauls
Freddie Creech	Bess Ragsdale	Margaret Walker

If you would like to add someone to this list, please contact Karen at: karen.creech@ncpublicschools.gov



If you have an idea for an article or information you would like to see added to the newsletter, please contact the editor, **Karen Creech**, at karen.creech@ncpublicschools.gov



DKG Eta State NC Engraved Brick Form

Name _____

Address _____

Telephone: Home _____ Cell _____

E-mail _____

Chapter _____

Please send the attached LASER ENGRAVING 4 X 8 ENGRAVED PAVER WORKSHEET with this form to Ruth Jones, 3607 Wyneston Road, Greenville, NC 27858 with \$125.00 for each brick to be purchased.

Message on Worksheet is three lines of 18 characters per line including commas, spaces, and symbols.

Message must be on official PINE HALL BRICK WORKSHEET.

Contribution to: Alpha Beta Chapter Endowment Fund
Established 5-11-2000

Date of Contribution: _____
Contribution in Memory/Honor of: _____
Person to be Notified of Contribution: _____
Address of Person to be Notified: _____
Contributor's Name: _____
Amount: _____ Check Number: _____ Cash: _____

Make Checks to Alpha Beta Chapter and mail to Becky Kuszmaul at: 2861 Yelverton Grove Rd. Smithfield, NC 27577.

Contribution to: Alpha Beta Chapter Endowment Fund
Established 5-11-2000

Date of Contribution: _____
Contribution in Memory/Honor of: _____
Person to be Notified of Contribution: _____
Address of Person to be Notified: _____
Contributor's Name: _____
Amount: _____ Check Number: _____ Cash: _____

Make Checks to Alpha Beta Chapter and mail to Becky Kuszmaul at: 2861 Yelverton Grove Rd. Smithfield, NC 27577.

Contribution to: Alpha Beta Chapter Endowment Fund
Established 5-11-2000

Date of Contribution: _____
Contribution in Memory/Honor of: _____
Person to be Notified of Contribution: _____
Address of Person to be Notified: _____
Contributor's Name: _____
Amount: _____ Check Number: _____ Cash: _____

Make Checks to Alpha Beta Chapter and mail to Becky Kuszmaul at: 2861 Yelverton Grove Rd. Smithfield, NC 27577.