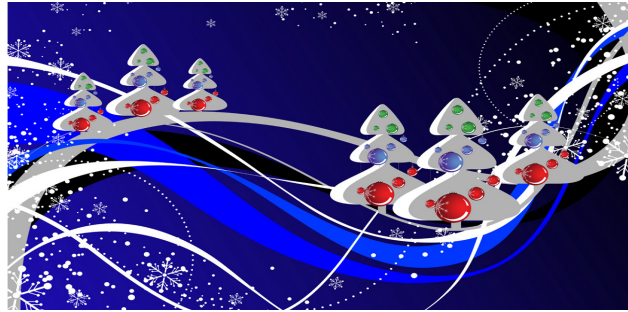


**Δ (Delta) Κ (Kappa) Γ (Gamma)**



**Epsilon Chapter – November 7, 2009  
McConnell House – Wurtland, KY (directions on back)  
Beverly Evans and Johnda Curry, Hostesses**

**Registration and Auction Browsing: 9:00– 9:30 am**

**Business Meeting and Program: 9:30-10:15 am**

**Reports include the following:**

**Service/Personal Growth Committee and  
Volunteer Efforts and Records Awards**

**Program: Historical Restoration of Catlettsburg Mansions, Laura  
Tussey**

**Brunch: 10:15-10:45 am**

**Grant-in-Aid Auction: 10:50-12 noon**

**Adjournment: 12 noon**

---

**RESERVATION FORM**

**Your Name:**

\_\_\_\_\_

**I will attend \_\_\_ I will not attend \_\_\_ (my \$10 for GIA auction is  
enclosed)**

**I will be bringing a guest \_\_\_\_\_ Her name is**

\_\_\_\_\_

**There will be a \$10 charge for brunch. Please send your \$10  
payment to Beverly Evans, PO BOX 229, Worthington, KY, 41183,**

no later than October 31<sup>st</sup>.

Please make your brunch check payable to: **Beverly Evans**  
Please make your GIA auction check payable to: **Delta Kappa Gamma**

Directions to McConnell House

From I-64: Take the Industrial Parkway exit. Circle around onto the parkway and continue until you arrive at the stoplight in Wurtland (intersection of US 23). Go straight through the stoplight and make a sharp right onto County Road 3105, and then take a quick left. The McConnell House is directly in front of you. Parking lot is in rear of house.

From US 23: Turn onto County Road 3105 across from Industrial Parkway exit. Make a sharp right and then a quick left. Parking lot is in rear of house.